

# ROKEBY HIGH SCHOOL



## ROKEBY REDEVELOPMENT ROCKS

### School looks to future

A GROUP of community workers, youth workers, support agencies, employment agencies and teachers have committed to support the "Futures for All" concept at Rokeby High School.

The school's partnership with the Beacon Foundation "No Dole" program is a crucial component of Futures for All.

This helps provide support for every student to achieve goals towards employment or further education.

Central to this program is "real learning" experiences for students.

The program started in 2006 when a partnership between TAFE, the Clarence City Council and the school was established to support the refurbishment of the Rokeby Skate Park.

This featured TAFE horticulture students acting as mentors and tutors for some Rokeby High School students. Great results were achieved as the skate park is a terrific example of collaboration with a design "owned" by the community.

Two current examples of programs are a landscaping/gardening project at the Clarendon Vale Childcare Centre and a Water-wise community garden being constructed at Rokeby High.

Both projects involve partnerships with the Clarence Council, SCOPE (Southern Career Opportunities Through Partnership and Enterprise) and the school.

MAX SANDERSON

AFTER several years work, a wonderful new learning area has been completed at Rokeby High School.

Late in 2005 a committee of teachers and students started work on the project.

The committee visited Rose Bay, Clarence and Taroona high schools to look at their recent redevelopments to get an idea of what could be achieved with the money assigned.

This was a great chance to see what had worked for other schools and what had not worked.

Eventually the committee and the architects finalised the design for four new classrooms, staff office, conference room with smart board, new toilets and an auditorium with foyer, change rooms and a full sound and lighting system.

In 2006 teachers and students started work with architects Design Inc to design the redevelopment of the performing arts area.

Performing arts is a huge part of the school and many students and teachers spend countless hours working on

wonderful performances.

Construction began late in the year. As in any large construction job there were some unexpected ups and downs but the architects and the builders worked hard to create a great final product.

It was completed during Term 2 this year and the students were finally able to move in. The new areas have proven to be practical and versatile.

The auditorium has held several excellent performances of dance and music in Term 3 alone. The equipment

now available has made such performances even more impressive than they were before.

It is wonderful resource for the teachers, students and the wider community.

The entire area is under constant video surveillance which has proved to be an affective deterrent to any misbehaviour.

This has been so successful that soon the original part of the school will also have surveillance installed.

The redevelopment has enabled new and different ways

of teaching where students are able to work in ways than will most benefit them in what they are doing not only at the particular time but throughout their entire time at Rokeby High School.

It allows students to experience a range of different learning styles and situations that will be valuable experiences for whatever the future holds for them. It supports an affective and modern style of learning which has proven to be great for everyone at Rokeby High School.

## Students benefit from net-work

ROKEBY High School was one of the pioneer online learning schools in Tasmania with courses first offered in 2001.

Online learning is well suited to people with independent learning skills who want to explore subject options which may only be available in large high schools.

This year students in Grades 8, 9 and 10 have participated in online classes such as creative writing, French, German, sport science and aqua science.

In online learning, tasks and work are sent in an online classroom, which includes emails and learning tasks posted on message boards.

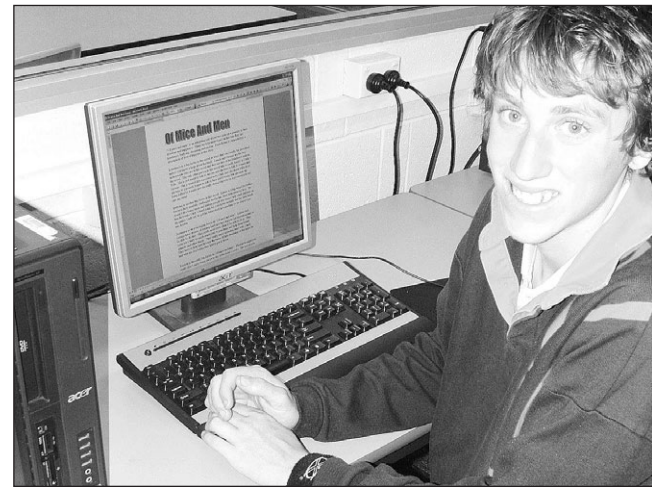
Some classes such as LOTE (languages other than English) hold weekly telephone conferences.

As well as talking to teachers and other students over the Internet, students can attend excursions to meet in a conventional classroom environment.

We value the opportunity

to enrol in an online learning option because even though our school is small we are able to study just about anything that is offered in larger schools.

In 2008 students and staff from our school will benefit from the introduction of Study Wiz. This online learning school-based program enables teachers to create personalised online learning programs for all students in their classes.

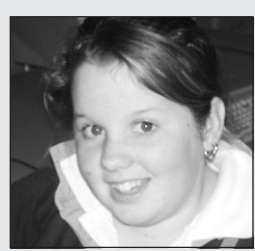


E-CHALK: Student Josh Knibbs learns online.

SCARLET CRAWFORD-LEHMAN

### School talk

What do you like about Rokeby High School?



**KAITLYN WRIGHT, Gr 7:** I like the music department. It rocks!



**MICHAEL HUTCHINGS, Gr 8:** The teachers are easy to get along with.



**SIANNA COOK, Gr 9:** The school itself. Everyone is friendly.



**ZANE CARNEY, Gr 10:** The new development looks awesome.



**BEN BANNISTER, teacher:** It's rewarding. I love working with all the staff and students.

THIS Mercury School Page was produced by Grade 10 students at Rokeby High School. Editorial team: Max Sanderson, Sarah Lamble, Robert Braslin, Joshua Mead, Scarlett Crawford-Lehman and Ashmeeta Varma.

**nie** Newspapers in Education **SCHOOL PAGE PROGRAM** Ph: 6230 0736 <http://ink.news.com.au/mercury>

**COREY BROWN**  
ELECTRICAL Pty Ltd  
Lic No C01973  
Proud to support Rokeby High School  
Domestic & Commercial Installations  
phone: 6247 6005  
fax: 6247 6007  
email: cbetas@bigpond.net.au  
Shop 1-5, 27 South Arm Rd, Rokeby, Tas 7019

**RNH**  
AUDIO AND VIDEO  
Smarter Security Solutions  
ACN 107 131 715 225 CAMPBELL ST HOBART 7000 03-6231 1543  
1300 764 820  
Proudly Supports Rokeby High School

**DCM Builders Pty Ltd**  
ABN 65 954 626 497 Builders License No. CC 1367V  
All Building and Maintenance Work  
Glass Repairs  
24 hour service • 7 days a week  
Free Quotes  
PO Box 1004, Glenorchy, Tasmania 7010  
Email: dcmbuilders@bigpond.com  
Paul Menzie  
Mobile 0418 125 710  
Fax (03) 6273 2417

**TOTAL TURF CARE**  
SPORTS OVAL CONSTRUCTION & MAINTENANCE SPECIALISTS  
Nick Hansen  
04 18 127 317

ADVERTISEMENT  
**ALP Lin Thorp MLC**  
Labor Member for Rumney  
Parliament House, Hobart 7000  
Tel: 6233 2355  
Fax: 6233 5917  
lin.thorp@parliament.tas.gov.au  
www.linthorp.com  
"Rokeby High is a great school in a great community. It is a pleasure to be their local representative. I wish them all the best"  
Written & authorised by Lin Thorp, Parliament House, Hobart

**Robbie's Confectionery**  
PH 6247 1047  
Distributors of Cadbury, Mars, Nestle, Snacks & Drinks  
Proud supporters of Rokeby High School

**Rokeby High - Building our Future**  
FenceCITY  
JoineryNOW  
HardwarePRO

**DesignInc**  
ARCHITECTURE  
URBAN DESIGN  
INTERIORS  
ENVIRONMENTAL DESIGN  
HERITAGE  
+613 6223 6799  
+613 6223 1563  
tasmania@designinc.com.au  
www.designinc.com.au

Proud to support Rokeby High School  
**Harmony Garden Centre**  
450 South Arm Rd, Lauderdale 7021  
Ph 6248 6149

**ep Cut'n Polish Hair Design**  
Hair Design  
OPEN MON-FRI  
ALL DAY SAT  
LATE ON WED, THU, FRI  
Knopwood Centre  
Shop 4, 46 South Arm Rd, Rokeby  
PH 6247 8844  
Proud sponsors of Rokeby High School